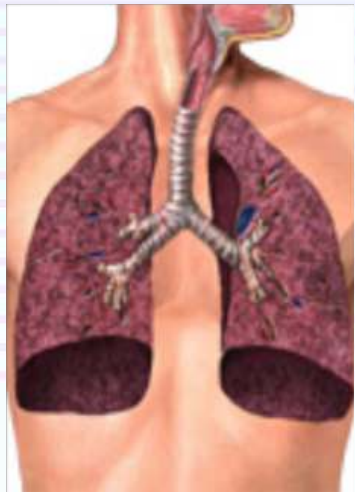


Asthom™

Salbutamol Sulphate 2 mg. & Theophylline 100 mg. Tablets

Asthom Forte™

Salbutamol Sulphate 4 mg. & Theophylline 200 mg. Tablets



Salbutamol & Theophylline is used to relieve and prevent bronchospasm associated with asthma, bronchitis, emphysema and other pulmonary disorders where bronchospasm is a complicating factor. It is also indicated in the prevention of exercise-induced bronchospasm.

**Breathe easy with Asthom
and Asthom Forte**

For severe Asthma...

